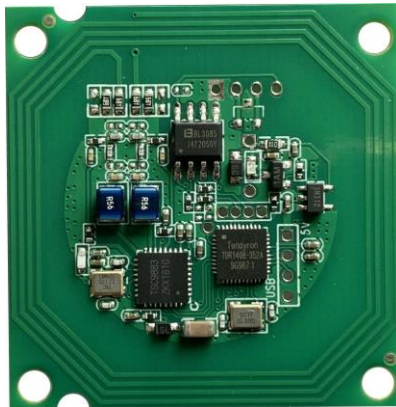

HF RFID/NFC Integrated Module



1. Product description

HF RFID high-frequency integrated module is a professional-grade ,

high-performance high -frequency integrated module . The module is designed and developed based on the ISO 15693/ ISO 14443A/B protocol. It adopts the integrated design of the module and antenna, which is convenient for users to integrate quickly. The module supports ISO 15693/ ISO 14443A/B protocol card operation. The module adopts RS-485 signal interface, DC5V power supply.

Features

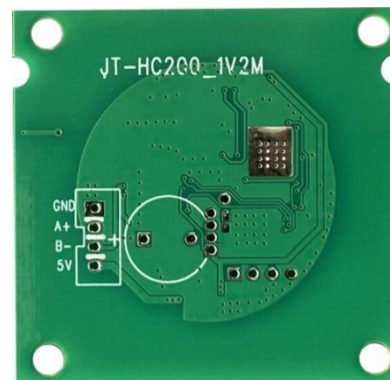
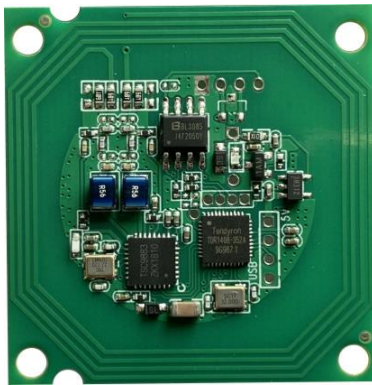
- Support RS-485/TTL communication interface ;
- Support automatic card search ;
- Support ISO 15693/ ISO 14443A/B protocol electronic label;
- Using integrated radio frequency chips, the module performance is more stable, and it is more suitable for harsh and demanding application environments;
- Excellent anti-interference performance .

2. Product technical parameters

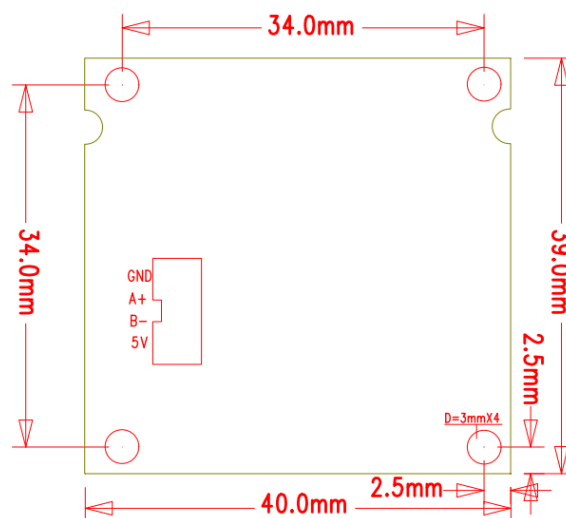
Technical Parameters	
working frequency	13.56Mhz
supporting agreement	Support ISO 15693/ ISO 14443A/B protocol card
Reading distance	5cm (reading distance is related to tag type, transmit power and application environment)
Communication parameters	
Communication Interface	TTL/RS485
Serial baud rate	115200 bps without parity, 8 data bits, 1 stop bit
Power parameters	
Device power supply	DC 5V
Read card current	100mA
stand-by current	40mA

Environmental parameters	
Operating temperature	-20 °C ~ 60 °C
storage temperature	-30 °C ~ 70 °C_
storage humidity	5% ~ 95%RH non-condensing
physical parameters	
structure size	40X39mm
product weight	about 10g

3, Appearance and Dimensions



HF RFID integrated module product map



4. Interface description

foot number	name	describe
1	5V	Module 5V power input
2	B-	RS-485B
3	A+	RS-485A
4	GND	modularly